

DRAWING NUMBER
27-30

DRAWING NUMBER

DRAWING NUMBER

DRAWING NUMBER

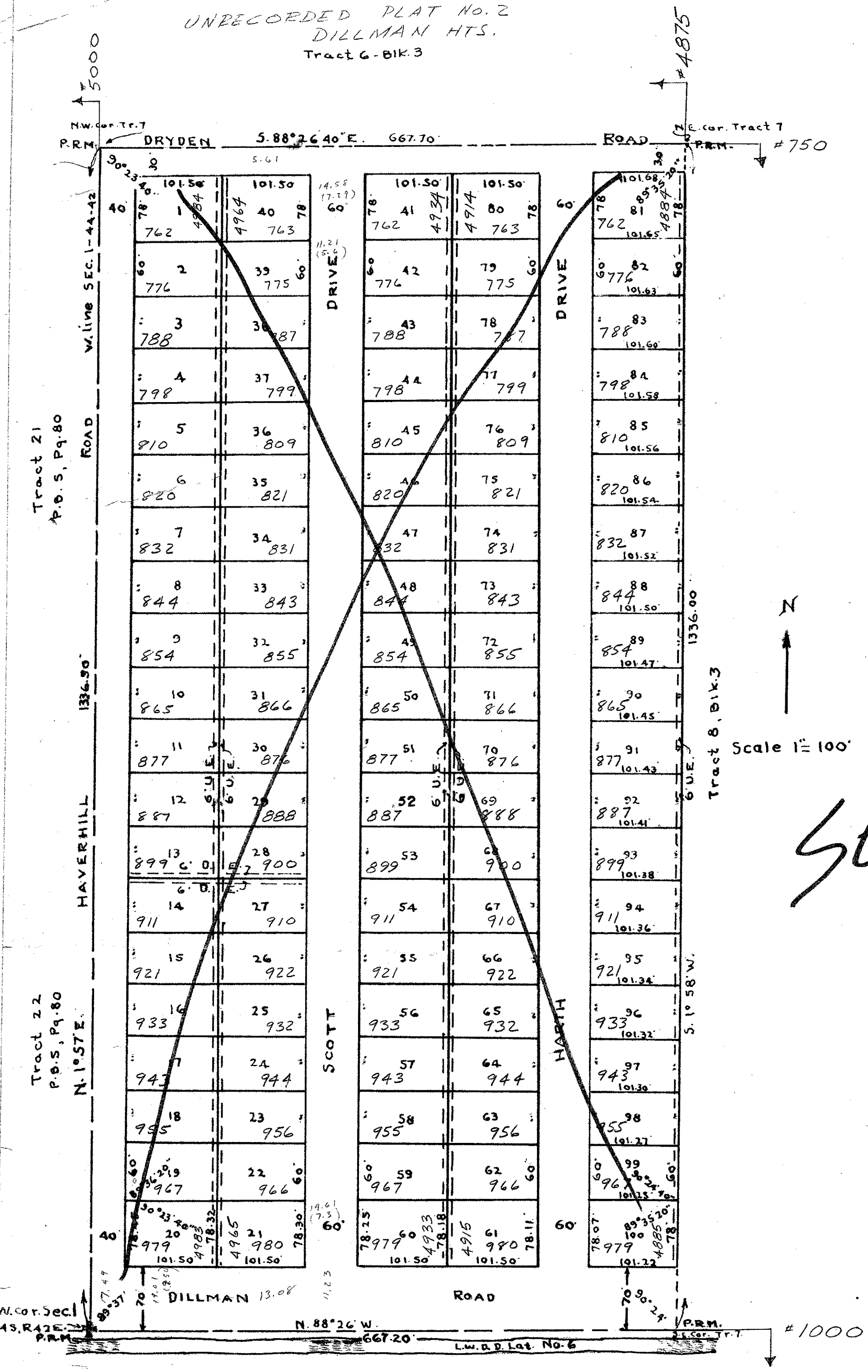
UNRECORDED PLAT No. 2
DILLMAN HTS.
Tract 6-BLK 3

PLAT ONE

DILLMAN HEIGHTS
A SUBDIVISION OF TRACT 7, BLOCK 3, OF
PALM BEACH PLANTATIONS (MODEL LAND CO.)
Plat No. 1. Sheet No. 1. IN SEC. 1-44-42, as
Recorded in P.B. 10, Page 20.

30

16 August 4:29 P
61
27 30
J. W. Blacklum



There shall not be any buildings on utility easements.
There shall not be any buildings or any kind of construction or planting of trees or shrubs on drainage easements.
Easements are for public utilities unless shown. Building set-back lines shall be as required by the Palm Beach County Zoning Commission.

SEE REPLAT (27-31)

DEDICATION

STATE OF FLORIDA } ss.
COUNTY OF PALM BEACH }
Know all men by these presents that DOUBLE R-J RANCH, INC., West Palm Beach, Fla. is owner in fee simple of a tract of land shown on this plat as Plat No. 1, DILLMAN HEIGHTS, located in Palm Beach County, Florida and described as follows:
Tract 7, Block 3 of PALM BEACH PLANTATIONS (MODEL LAND CO.), Plat No. 1, P.B. 10, Pg. 20, Sec. 1-44-42, and by and with the authority of the Board of Directors has caused the same to be surveyed and platted as shown hereon and has hereby dedicated to the perpetual use of the public, highways, all Roads and Drives as shown hereon, also DILLMAN ROAD, and the owner also dedicates to the perpetual use of the public the easements shown hereon for the purposes as stated on this plat.

In witness whereof, the said corporation has caused these presents to be signed by its President and attested by its Secretary and its corporate seal affixed hereto by and with the authority of its Board of Directors this 10th day of May 1961.

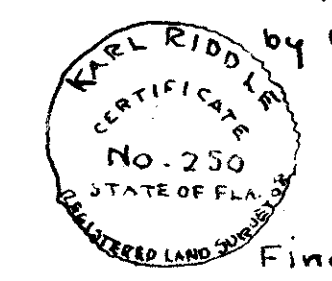
DOUBLE R-J RANCH, INC.
By: Sallie A. Harth
President
Attest: Sigrid E. Rogers
Secretary

ACKNOWLEDGEMENT

STATE OF FLORIDA } ss.
COUNTY OF PALM BEACH }
I hereby certify that on this day personally appeared before me, an officer duly authorized to administer oaths and take acknowledgements, Sallie A. Harth and Sigrid E. Rogers, President and Secretary, respectively, of DOUBLE R-J RANCH, INC., a Florida Corporation, to me well known and known to me to be the individuals described in, and who executed the foregoing dedication, and they acknowledged before me that they executed the same as such officers of said Corporation by and with the authority of the Board of Directors of said Corporation for the purposes therein expressed, and that their act and deed was the act and deed of said Corporation.
Witness my hand and official seal at West Palm Beach, County of Palm Beach, and State of Florida, this 24th day of MAY A.D. 1961.
My commission expires: 12-10-63

Hal Mouchick
Notary Public

STATE OF FLORIDA } ss.
COUNTY OF PALM BEACH }
I hereby certify that the plat shown hereon is a true and correct representation of a survey made by me and is accurate to the best of my knowledge and belief, and that permanent reference monuments (P.R.M.) have been set as required by law.
Karl Riddle
Registered Land Surveyor
Fla. Cert. No. 250.
Final date of survey 5-3-61.



Approved: August 16, A.D. 1961.
Board of County Commissioners
By: Stephen Christ
County Engineer
By: Paul J. Sunday
Chairman

Subscribed and sworn to before me this 13th day of May 1961.
My commission expires: 10-27-61

Harriet H. Mackenney
Notary Public.

Calo. B. Wil
1/44/42
(27-30)

